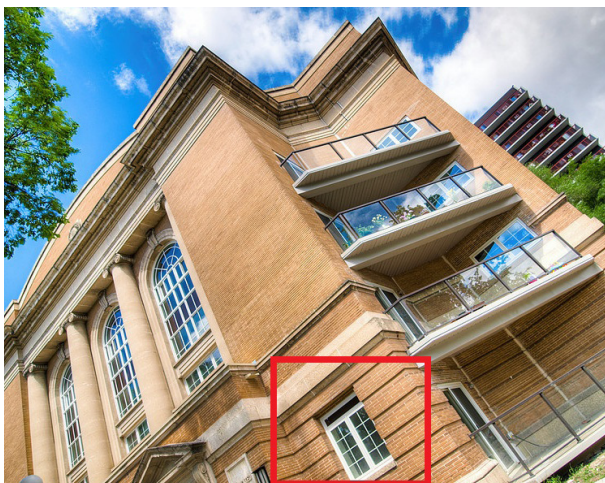
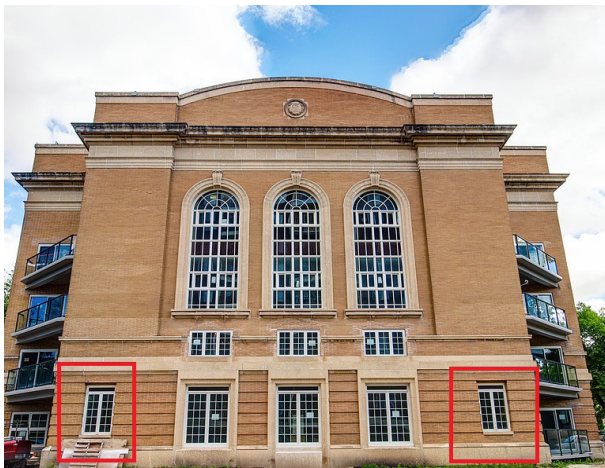
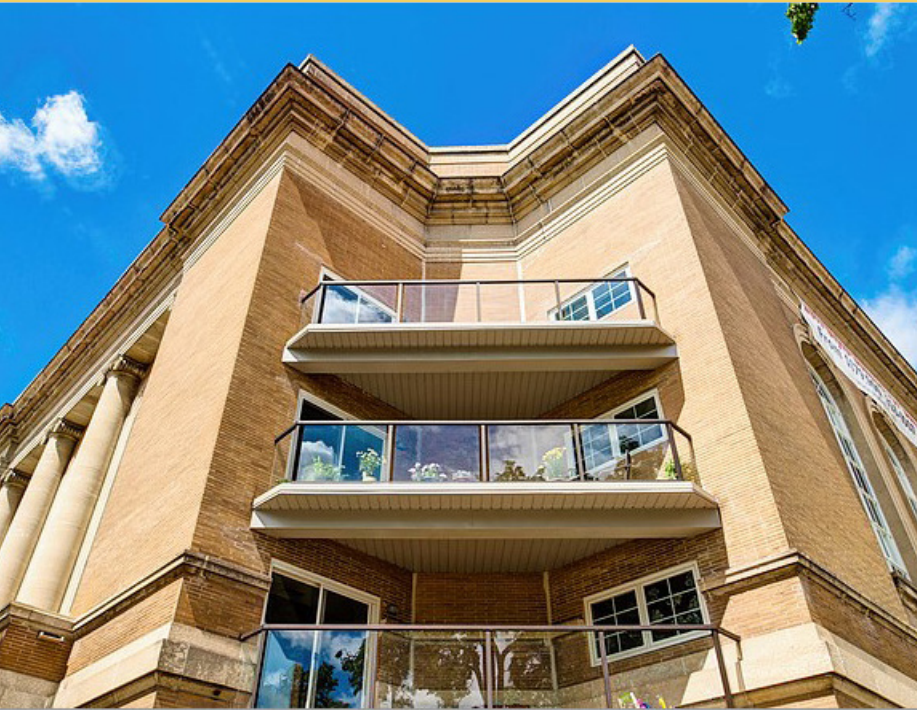


Project Brief: Studio 511



A Divine Renovation.

The historic First Church of Christ Scientist in Osborne Village was slated for demolition when GW Architecture Inc. stepped in. Together with the developer, Stonebridge Development Group, a plan was conceived to convert the heritage building at 511 River Avenue into 46 condominiums. Marvin® Windows and Doors were chosen for the project.

PROJECT HIGHLIGHTS:

Name: Studio 511

Location: 511 River Ave., Winnipeg, Manitoba

Project Type: Replacement, Historical Renovation

Building Type: Multifamily Residential

Product Series: Marvin Clad (Infinity Casement on first floor)

Product Types: Windows and Doors

Builder/Remodeler: G&E Homes

Architect: GW Architecture Inc.

THE MIRACLE OF MARVIN

The Marvin windows and doors throughout were instrumental in the transformation of this historic landmark, delivering both practicality and aesthetics. All windows were Marvin Clad, with the exception of the first floor, where 6x Infinity Casement 2-wides with Direct Glaze transoms were featured.

Learn more at MarvinCanada.com